

ANT-20/ANT-20E, SDH Version

Start me up

Quick Operating Guide

This leaflet tells you about the ANT-20's user interface to get you started quickly and easily. Many other functions are self-explanatory, so you don't need the full manual to see how they work.

Contents

- A. Setting the signal structure
- B. Selecting the instruments you need
- C. Measuring
- D. Saving the application
- E. Saving the results

BN 3035/98.79
TP/EN/M001/1099/AE

Wavetek Wandel Goltermann
Eningen GmbH & Co.
Mühleweg 5, 72800 Eningen u. A.
Germany
© 1999 Printed in Germany
Issue 01/99.08, V7.0

Subject to change without notice



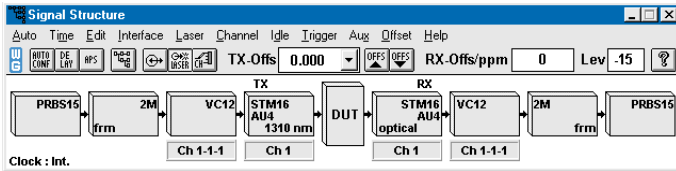
A. Setting the signal structure

- Find the “mini-bar” window



- Click on the “Signal Structure” button

The mini-bar is always displayed. It shows the measurement status. The buttons in the mini-bar are used to switch between the various windows in the ANT-20 user interface.



The “ANT-20 Signal Structure” window opens. It shows the last signal structure that was set.

- Click on “**Edit**” → “**Signal Structure**”

Edit	Mode	SDH	Mapping	PDH	PDH Mode	Settings
[TX]	[Normal]	STM64	VC4	140M	[Framed]	Mapping Mode
[RX]	[Through]	[STM16]	VC3	45M	[Unfrm.]	Async.
[ITU-T]	[Replace]	STM4	VC2	34M	[External]	2M Framing
[ANSI]	[ADM Test]	STM1	[VC12]	8M	[ATM]	PCM30 CRC
[TX->RX]	[Interface]	STM0	VC11/TU12	6M	[PLCP-ATM]	DS3 Framing
[Clear]	[Electric]	[AU4]	VC11/TU11	[2M]		C-Parity
[OK]	[Optical]	AU3	CONCAT.	1.5M		DS1 Framing
			[Bulk]	[64K]		DS1-ESF ANSI
			[ATM]			Test Pattern
						PRBS15
						DW Set...

The “Signal Structure Editor” window opens. You can now set the signal structure that you want.

- When you click “**Clear**”, either the Tx or Rx side will be cleared, depending on the previous setting.
- Set the signal structure (Tx or Rx) by selecting one of the active buttons.
- Click “**TX** → **RX**” or “**RX** → **TX**”. The transmitter and receiver sides have now the same signal structure.
- Click on “**OK**”. The settings you made will then be activated.

B. Selecting the instruments you need

- Go to the “mini-bar” window

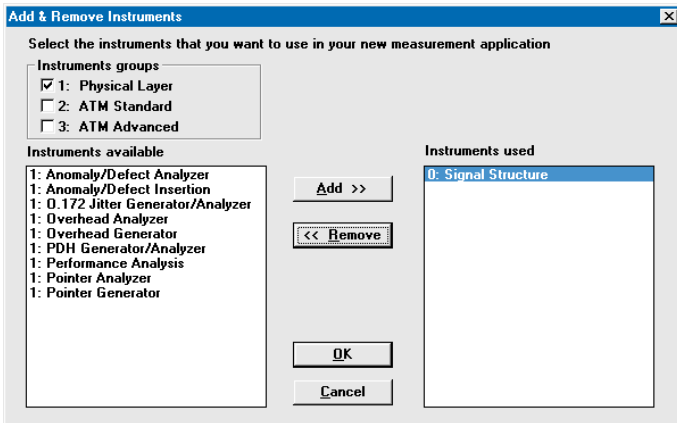


- Click on the “WG” button



The “ANT-20 Application Title” window opens. It may show the name of the last application used.

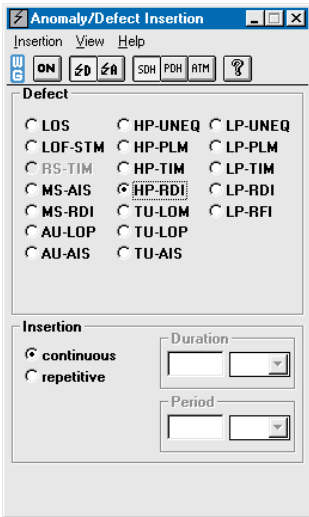
- Click on Instruments → Add & Remove



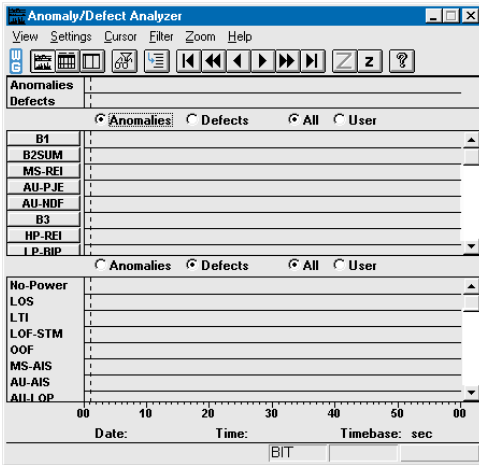
The “Add & Remove Instruments” window opens. It shows all the available instruments. A list of instruments in use is shown on the right. Those not yet in use are shown on the left.

- Select the instruments that you want to use (do not select more than 5).
- To select an instrument use the “Add > >” command or double-click on the instrument.
- When you have finished selecting instruments, click on “**OK**”.

B. Selecting the instruments you need (continued)



The windows for the instruments you selected will open. The example here shows the “Anomaly/Defect Analyzer” and “Anomaly/Defect Insertion” windows.



You can switch between these instruments (even during the measurement) using the buttons in the “mini-bar”.

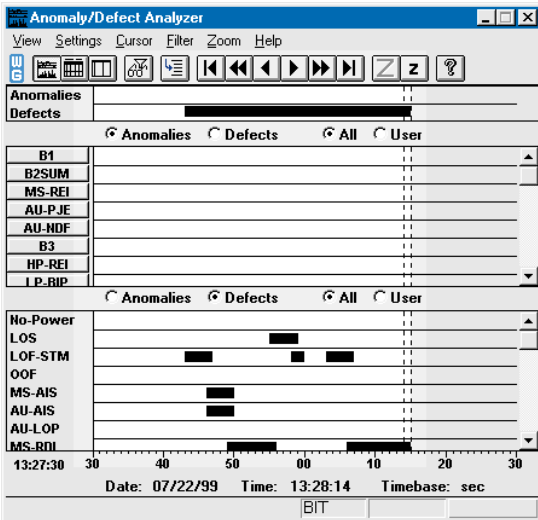
C. Measuring

- Press function key **F5** (“Start measurement”) on the keyboard to start the measurement.



The window indicates the **elapsed time and the measurement time** (in seconds).

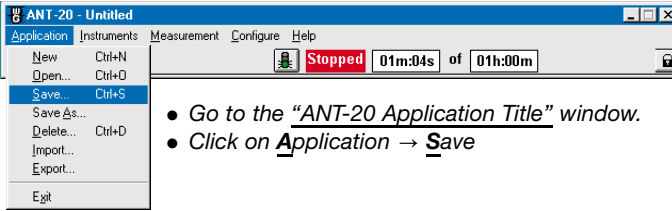
The traffic light symbol in the “Application Title” window changes to red and the measurement starts. To stop the measurement, press function key **F6** (“Stop measurement”) or click on the **red traffic light symbol**.



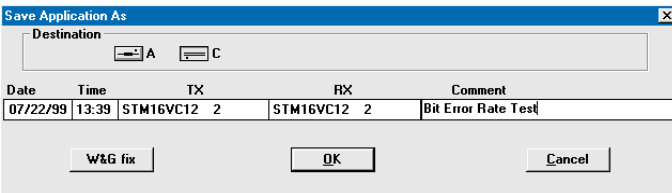
Example: The light area in the “Anomaly/Defect Analyzer” window shows the measurement in progress and the cursor position.

D. Saving the application

- Stop the measurement before you save the application (press function key **F6**).



The “Save Application” window opens.



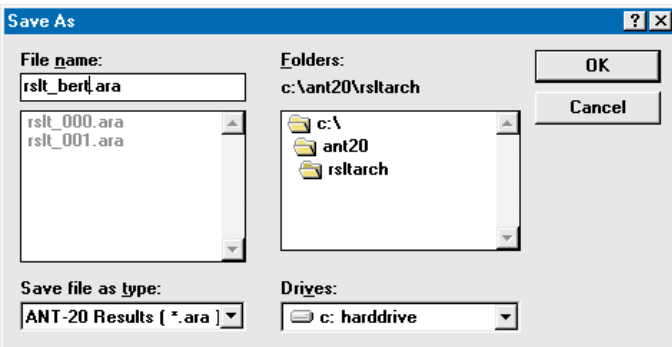
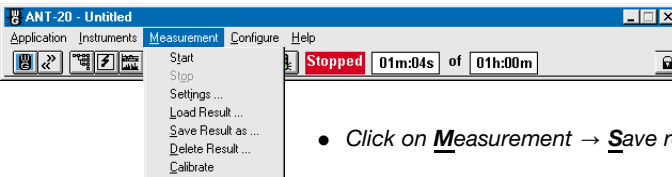
You will see the date, time and the Rx/Tx configuration. You must enter a name for the application in the “Comment” box.

- Click on **“OK”**.

The name you entered will now be shown in the “ANT-20 Application Title” window.

E. Saving the results

- Stop the measurement before you save the results (press function key **F6**).



• Select the drive, path and a file name.

- Click on **“OK”**.